

# 400 Series

## TELESCOPIC BOOM LIFTS



**Highest Rated  
Platform Capacity**



**Most Reach  
in Its Class**



**Oscillating Axle  
for Tough Travel**

**400S  
460SJ**

**[www.jlg.com](http://www.jlg.com)**



# Raising Profitability Faster than Ever!

You want a boom lift that is preferred by end users and has the lowest cost of ownership for improved profits. Your customers need to get into working position as quickly and efficiently as possible for optimum productivity on the job. That's why the JLG 400 Series telescopic boom lifts provide end-user benefits like the fastest lift and drive speeds, and the best gradeability and reach in their classes.

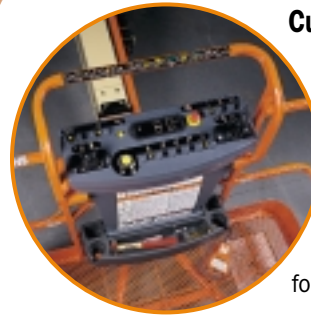
## 400 SERIES ADVANTAGES OVER COMPETITIVE PRODUCTS

- Reaches 2 to 3.5 Feet (0.61 to 1.07 m) Farther
- 90% Faster Boom Speed
- 100% More Platform Capacity Available
- 29% Faster Drive Speeds
- Field-Tested 45% Gradeability
- Four-Wheel Drive and Oscillating Axle Package



## Customer Preferred Controls

The 400 Series uses the same platform control arrangement as JLG's entire line of new generation boom lifts to facilitate operator and technical training. The design reduces the number of buttons and switches used to position the platform, and controls are spaced for use with gloved hands.



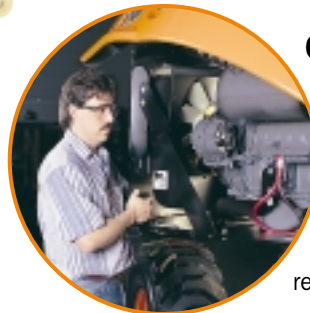
## Semi-Track Option and Exclusive Floating Idler System

The Semi-Track option allows you to travel through mud, sand and snow. The floating idler system allows the drive wheels to remain in contact with the ground for improved traction on uneven surfaces. Plus, for added versatility, the Semi-Track option can be easily removed in the field and converted back to a wheeled unit by removing a few bolts.



## Greater Serviceability

JLG has streamlined preventive maintenance on the 400 Series by eliminating rear lube points and providing ease of access with an engine swing-out tray. This reduces the cost of routine maintenance work and reduces machine downtime.





# Options to Create Your Workstation in the Sky™ Product

Now your JLG lift does more than just get you to your work site. With the introduction of the Workstation in the Sky™ family of JLG accessories, your lift becomes an integrated work tool.

Why Workstation in the Sky™ accessories...

- Fully integrated tools increase productivity by incorporating free standing tools into the machine enabling them to move with the machine and be more accessible to the operator
- Free standing tools integrated into the aerial work platforms relieve job site congestion by reducing individual equipment on site
- Reduce job site noise, emissions and fuel consumption by utilizing a single power source
- Eliminate multiple delivery and service charges and tracking of individual items of equipment
- Conserve valuable platform space with the efficiently designed JLG systems
- Improve working conditions by making work less strenuous, reducing operator fatigue, and benefiting from the efficient JLG designs

## SkyPower™ Package



*Sky* POWER

The JLG SkyPower™ Package enables the addition of many productivity enhancing JLG accessories. Machines with the SkyPower™ system are equipped with a self-contained 7500W generator with a power cable and an airline installed in the powertrack. A side-entry platform provides improved entry and allows for quick installation of the SkyGlazier™ panel tray. In addition to providing self-contained AC power to run hand tools, the SkyPower™ Package enables other accessories to be conveniently added including the SkyWelder™ Package and SkyCutter™ Package.

## SkyWelder™ Package

By integrating a 250 amp Miller® onboard welder into the SkyPower™ boom platform, JLG helps you save time, conserve space, and cut fuel and rental costs. The SkyWelder™ Package eliminates the need for a stand-alone welder and power supply. Plus, you won't have potentially dangerous leads hanging over the rails. Choose from stick or TIG capabilities and convenient features like a wire feed system.



## Operator Preferred Controls – Now with the Control ADE™ System

JLG's exclusive Advanced Design Electronics (Control ADE™) System helps optimize productivity while lowering your owning and operating costs.

- **Higher Productivity** – The Control ADE System provides smoother machine functions, increased fuel efficiency and reduced emissions.
- **Commonality of Components** – The Control ADE System is standard across all JLG engine powered boom lift models.
- **Enhanced Reliability** – The Control ADE System significantly reduces the number of wires and connections.
- **Improved Serviceability** – The Control ADE System self-test capability reduces troubleshooting time and identifies potential problems.
- **Enhanced Performance** – The Control ADE System allows function speeds and options to be customized to meet customer preferences.

## SkyGlazier™ Package

The first and only factory-approved glass and panel tray utilizes industry leading JLG capacity to get materials to the work site. JLG's SkyGlazier™ Package improves productivity and reduces operator fatigue, while protecting panels from damage.



## Nite Bright™ Package

JLG's all new Nite Bright Package consists of six 40W lights — four chassis mounted lights and two platform mounted lights. The Nite Bright™ Package illuminates your work site plus the area around the chassis for increased visibility, and is perfect for nighttime work or any job with low lighting levels.



## SkyCutter™ Package

Cut faster and cleaner with an on-board Miller® plasma cutter. Eliminate the dangers of Oxygen/Acetylene tanks and hoses draped over the railings. Add SkyCutter™ Package to any unit equipped with the SkyPower™ features for increased productivity.



## Pipe Rack Accessory

JLG's exclusive Pipe Rack Accessory is designed to secure pipes close to where they are needed. The pipe rack is mounted to the top platform rail and can hold up to 180 lbs. (80 kg) of pipe.



Keep checking [www.jlg.com](http://www.jlg.com) for additional Workstation in the Sky™ accessories.

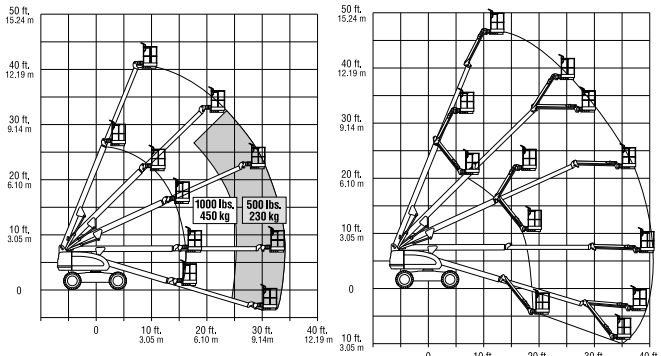
\*Miller® is a trademark of Miller Electric.

# JLG MODEL 400S/460SJ SERIES

# PERFORMANCE FEATURES

**400S**

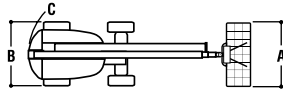
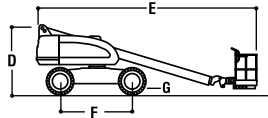
**460SJ**



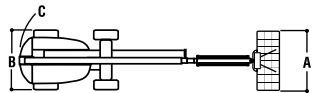
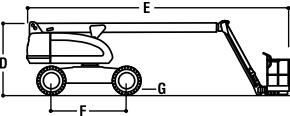
## REACH SPECIFICATIONS

Platform Height (400S)	40 ft. (12.19 m)
Platform Height (460SJ)	46 ft. (14.02 m)
Horizontal Outreach (400S)	34 ft. (10.36 m)
Horizontal Outreach (460SJ)	40 ft. 6 in. (12.34 m)
Swing	360 Degrees Continuous
Platform Capacity-Restricted (400S)	1,000 lbs. (450 kg)
Platform Capacity-Unrestricted	500 lbs. (230 kg)
Optional	750 lbs. (340 kg)
Platform Rotator	180 Degrees Hydraulic
Jib (Range of Articulation) (460SJ)	6 ft. (1.83 m), 130 Degrees (+70, -60)
Lift/Lower Speed	32/23 seconds

**400S**



**460SJ**



## DIMENSIONAL DATA

A. Platform Size	36 x 96 in. (0.91 x 2.44 m)
B. Overall Width	7 ft. 6.5 in. (2.30 m)
C. Tailswing	2 ft. 10 in. (86 cm)
D. Stowed Height	7 ft. 10 in. (2.39 m)
E. Stowed Length (400S)	24 ft. 9 in. (7.54 m)
E. Stowed Length (460SJ)	29 ft. (8.84 m)
F. Wheelbase	7 ft. 8 in. (2.34 m)
G. Ground Clearance (Standard Tires)	12.5 in. (32 cm)
(14 x 17.5 Tires)	13.5 in. (34 cm)
Gross Vehicle Weight* (400S)	12,525 lbs. (5,681 kg)
Gross Vehicle Weight* (460SJ)	15,855 lbs. (7,192 kg)

## CHASSIS

Drive Speed 2WD/4WD	4.5 mph (7.2 kph)
Gradeability 2WD	30%
Gradeability 4WD	45%
Turning Radius (Outside)	16 ft. 5 in. (5.0 m)
Turning Radius (Inside)	6 ft. 8 in. (2.03 m)
Tire Size/Type (Standard)	12 x 16.5 Pneumatic
(Optional)	14 x 17.5 Pneumatic

## POWER SOURCE

Dual Fuel Engine	Ford LRG-425 EFI, 82 hp (61.1 kW)
Diesel Engine	Deutz F3M1011, 48 hp (35.8 kW)
Fuel Tank Capacity	26 gal. (98.5 L)
Hydraulic Reservoir	42 gal. (159 L)
Auxiliary Power	12V DC
Engine Noise Level (at max. rpm)	70 dBA @ 7 meters

\*Certain options or country standards will increase weight.

## Standard Features

- 6 ft. (1.83 m) Articulating Jib (460SJ Only)
- 36 x 96 in. (0.91 x 2.44 m) Platform
- Inward Swing Gate
- 180 Degree Hydraulic Platform Rotator
- Platform Console Machine Status Light Panel\*
- 110V-AC Receptacle in the Platform
- 5 Degree Tilt Alarm/Indicator Light
- 12V-DC Auxiliary Power
- Proportional Controls
- Lifting/Tie Down Lugs
- Hourmeter
- Control ADE™ System
- Swing-Out Engine Tray
- Lockable Tool Box
- Oscillating Axle
- 12 x 16.5 Rim Protector Lug Tread Tires
- Horn
- Operator Tool Tray

\* Provides indicator lights at platform control console for system distress, low fuel, 5 degree tilt light, and foot switch status.

## Options

- 750 lbs. (340 kg) Unrestricted Capacity with 1,000 lbs. (450 kg) Restricted Capacity<sup>1</sup>
- Platform Work Lights
- 36 x 72 in. (0.91 x 1.83 m) Platform
- ½ in. (1.3 cm) Air Line to Platform
- Soft Touch System
- Foam-Filled Tires
- 14 x 17.5 Lug Tread Tires
- High Flotation Sand/Turf Tire (4WD Only)
- Semi-Track
- 2500W Generator
- Tow Package<sup>2</sup>
- All Motion Alarm
- Flashing Amber Beacon
- 43.5 lb. Propane Tank
- Cold Weather Start Kit<sup>3</sup>
- Hostile Environment Kit<sup>4</sup>
- Alarm Package<sup>5</sup>
- Tire Sealant

1. Not available on Model 460SJ.
2. Wheel Drive Only.
3. Includes engine block heater (Ford) or ether assist (Deutz), battery heater, oil manifold heater and oil tank heater.
4. Includes boom wiper seals, cylinder bellow, turntable shield and console cover.
5. Includes all motion alarm and flashing amber beacon.

## Accessories

**SkyPower™ Package** — Includes 7500W generator, power cable to platform, and ½ in. air line to platform.

**SkyWelder™ Package** — Includes SkyPower™ Package, 250-Amp Miller® welder in the platform, leads, clamp and stinger.

**SkyCutter™ Package** — Includes SkyPower™ and Miller Plasma Cutter mounted in platform.

**SkyGlazier™ Package** — Includes glass/panel tray, protective foam padding and strap.

**Nite Bright™ Package** — Includes six 40W lights (platform and chassis mounted).

**PipeRack** — Platform Mounted — 180 lbs. (80 kg) capacity.

## The JLG "1 & 5" Warranty

JLG Industries, Inc. backs our products with our exclusive "1 & 5" Warranty. We provide coverage on all products for one (1) full year, and cover all specified major structural components for five (5) full years. Due to continuous product improvements, we reserve the right to make specification and/or equipment changes without prior notification. This machine meets or exceeds applicable OSHA Regulations in 29 CFR 1910.67, 29 CFR 1926.453, ANSI A92.5-1992 and CSA standard CAN3-B354.4-M82 as originally manufactured for intended applications.

## JLG Industries, Inc.

1 JLG Drive, McCConnellsburg, PA 17233-9533  
 Telephone 717-485-5161 Toll-free in US 877-JLG-LIFT  
 Fax 717-485-6417  
 www.jlg.com

Printed in USA  
 FORM NO.: SS-400S-1002-10M  
 PART NO.: 3131026

