

E400

Series

One of the New Generation of JLG Electrics

www.jlg.com/E400



More Models,
More Choices and
More Versatility
with JLG...
**WHY GO
ANYWHERE
ELSE?**

40 ft platform height articulating electric powered boom lift.

Non-marking tires, zero emissions and quiet operation make the E400 Series the machine of choice for indoor applications.

The JibPLUS™ boom feature allows access in and around confined work areas to increase productivity.

The 4 ft 11 in narrow chassis model provides the versatility to maneuver in narrow aisles and confined areas.

ATC (Automatic Traction Control) adds to the versatility of the E400 Series by sensing and providing positive traction on uneven surfaces.

JLG's QuikCharge GenSet option provides automatic charging for continuous machine operation.

Versatile Electric Boom Lifts You Can Take Almost Anywhere!

E400 Series articulating boom lifts set a new standard for all electric powered aerial work platforms, delivering greater value along with quiet operation, elimination of common emissions and a low cost, high value return on investment.

JLG, the world leader in the design of high productivity aerial work platforms, delivers a full range of features not available anywhere else.

Features include the exclusive JibPLUS™. No matter where the work is, the JibPLUS™ delivers the right position with its ability to move side-to-side as well as up and down.

When you combine the JibPLUS™ benefits with our Automatic Traction Control (ATC) off-slab mobility advantage, you get more precise positioning in hard-to-reach areas on both improved and non-improved surfaces.



Generation E by JLG...See and Feel the Difference!

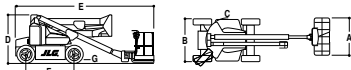
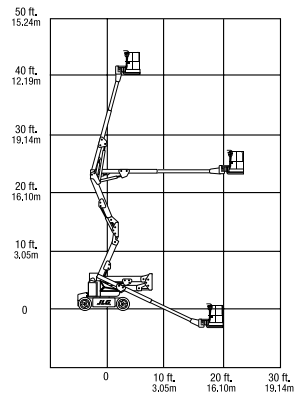
The new generation of electric powered boom lifts from JLG offers machines with platform heights from 30 ft to 60 ft, including the E400 Series with standard JibPLUS™ and a 4 ft 11 in narrow chassis model available.

JLG's 30+ years of design and manufacturing experience is evident in this new generation of machines with more

features designed to increase productivity, allowing for customization of the machines to meet specific work requirements.

Options on Generation E machines like QuikCharge GenSet, oscillating axle, and JibPLUS™ set this new generation of machines above the rest.

JLG Model E400A & E400A narrow



REACH SPECIFICATIONS

| | |
|---------------------|----------------------------|
| Platform Height | 40 ft (12.19 m) |
| Horizontal Outreach | 22 ft 5 in (6.83 m) |
| Up and Over Height | 21 ft 6 in (6.55 m) |
| Swing | 360 Degrees Non-Continuous |
| Platform Capacity | 500 lb (230 kg) |
| Platform Rotator | 180 Degrees Hydraulic |

DIMENSIONAL DATA

| | |
|---------------------------------|----------------------------------|
| A. Platform Size | 30 in x 48 in (.76 m x 1.22 m) |
| B. Overall Width (E400A) | 5 ft 9 in (1.75 m) |
| (E400A narrow) | 4 ft 11 in (1.50 m) |
| C. Tailswing (E400A) | Zero |
| (E400A narrow) | 4 in (10 cm) |
| D. Stowed Height (E400A) | 6 ft 7 in (2.0 m) |
| (E400A narrow) | 6 ft 5.75 in (1.97 m) |
| E. Stowed Length | 22 ft (6.7 m) |
| F. Wheelbase | 6 ft 7 in (2.0 m) |
| G. Ground Clearance (E400A) | 8.5 in (22 cm) |
| (E400A narrow) | 5 in (13 cm) |
| Gross Vehicle Weight* (E400A) | 12,100 lb (5488 kg) |
| (E400A narrow) | 13,100 lb (5942 kg) |
| Ground Bearing Pressure (E400A) | 80 psi (5.6 kg/cm ²) |
| (E400A narrow) | 95 psi (6.7 kg/cm ²) |

CHASSIS

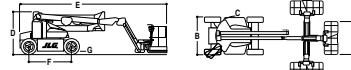
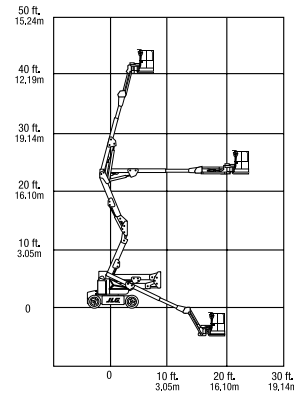
| | |
|---------------------------------|--|
| Drive Speed (E400A) | 3.2 mph (5.2 kph) |
| (E400A narrow) | 3.0 mph (4.8 kph) |
| Gradeability | 30% |
| Turning Radius (Inside) (E400A) | 2 ft (0.6 m) |
| (E400A narrow) | 2 ft 10 in (0.86 m) |
| Turning Radius (Outside) | 10 ft 4 in (3.15 m) |
| Tire Size / Type (E400 A) | 240/55-17.5 pneumatic |
| (E400A narrow) | 22 x 6 x 17.75 front, 25 x 7 x 12 rear non-marking |

POWER SOURCE

| | |
|--|---|
| Electrical System | 48V DC |
| Batteries | 8 x 6V 370 amp/hr |
| Drive Motors | Dual Electric Traction |
| Brakes | Automatic Spring Applied Multiple Discs |
| Hydraulic Motor/Pump | Permanent Magnet/Gear Pump |
| Hydraulic Reservoir | 4 gal (15.2 L) |
| Generator Set (M400A, M400A narrow) | Fully Automatic 45 amp |
| | Yanmar 6 hp Air-Cooled Engine |
| Engine Fuel Tank (M400A, M400A narrow) | 4 gal (15.2 L) |

*Certain options or country standards will increase weight.

JLG Model E400AJP & E400AJP narrow



REACH SPECIFICATIONS

| | |
|---------------------|----------------------------|
| Platform Height | 40 ft (12.19 m) |
| Horizontal Outreach | 22 ft 5 in (6.83 m) |
| Up and Over Height | 21 ft 6 in (6.55 m) |
| Swing | 360 Degrees Non-Continuous |
| Platform Capacity | 500 lb (230 kg) |
| Platform Rotator | 180 Degrees Hydraulic |

DIMENSIONAL DATA

| | |
|-----------------------------------|------------------------------------|
| A. Platform Size | 30 in x 48 in (.76 m x 1.22 m) |
| B. Overall Width (E400AJP) | 5 ft 9 in (1.75 m) |
| (E400AJP narrow) | 4 ft 11 in (1.50 m) |
| C. Tailswing (E400AJP) | Zero |
| (E400AJP narrow) | 4 in (10 cm) |
| D. Stowed Height (E400AJP) | 6 ft 7 in (2.0 m) |
| (E400AJP narrow) | 6 ft 5.75 in (1.97 m) |
| E. Stowed Length | 22 ft 0 in (6.7 m) |
| F. Wheelbase | 6 ft 7 in (2.0 m) |
| G. Ground Clearance (E400AJP) | 8.5 in (22 cm) |
| (E400AJP narrow) | 5 in (13 cm) |
| Gross Vehicle Weight* (E400AJP) | 13,700 lb (6214 kg) |
| (E400AJP narrow) | 14,900 lb (6759 kg) |
| Ground Bearing Pressure (E400AJP) | 80 psi (5.6 kg/cm ²) |
| (E400AJP narrow) | 185 psi (13.0 kg/cm ²) |

CHASSIS

| | |
|-----------------------------------|--|
| Drive Speed (E400AJP) | 3.2 mph (5.2 kph) |
| (E400AJP narrow) | 3.0 mph (4.8 kph) |
| Gradeability | 30% |
| Turning Radius (Inside) (E400AJP) | 2 ft (0.6 m) |
| (E400AJP narrow) | 2 ft 10 in (0.86 m) |
| Turning Radius (Outside) | 10 ft 4 in (3.15 m) |
| Tire Size / Type (E400AJP) | 240/55-17.5 pneumatic |
| (E400AJP narrow) | 22 x 6 x 17.75 front, 25 x 7 x 12 rear non-marking |

POWER SOURCE

| | |
|--|---|
| Electrical System | 48V DC |
| Batteries | 8 x 6V 370 amp/hr |
| Drive Motors | Dual Electric Traction |
| Brakes | Automatic Spring Applied Multiple Discs |
| Hydraulic Motor/Pump | Permanent Magnet/Gear Pump |
| Hydraulic Reservoir | 4 gal (15.2 L) |
| Generator Set (M400AJP, M400AJP narrow) | Fully Automatic 45 amp |
| | Yanmar 6 hp Air-Cooled Engine |
| Engine Fuel Tank (M400AJP, M400AJP narrow) | 4 gal (15.2 L) |

*Certain options or country standards will increase weight.

THE JLG 1 & 5 WARRANTY

JLG Industries, Inc. backs our products with our exclusive "1 & 5" Warranty. We provide coverage on all products for one (1) full year, and cover all specified major structural components for five (5) full years. Due to continuous product improvements, we reserve the right to make specification and/or equipment changes without prior notification. This machine meets or exceeds applicable OSHA Regulations in 29 CFR 1910.67, 29 CFR 1926.453, and ANSI A92.5-1992, as originally manufactured for intended applications.

FORM NO: SS-E400-9/00-100M
PART NO: 3131113 Printed in the USA
R02012

www.jlg.com/E400

JLG Industries, Inc.

1 JLG Drive, McConnellsburg, PA 17233-9553
Telephone 717-485-5161
Toll free in US 877-JLG-LIFT
Fax 717-485-6417

